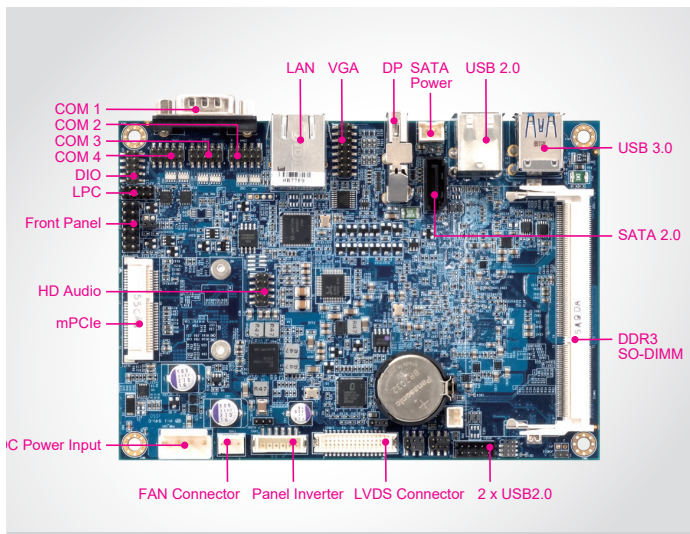


3.5" Board



Features



- Intel® N2930 / E3800 series SoC
- Wide temperature (-40 to 85°C) for E3900 series
- 1 x LAN, 6 x USB, 4 x COM, 8bit DIO
- 1 x DP, 1 x LVDS, 1 x VGA
- 1x half-sized mPCIe

Specifications

System

CPU Support	Intel® Celeron® N2930: 7.5w, 4C, 2.16GHz Intel® Atom® E3815: 5w, 1C, 1.46GHz Intel® Atom® E3825: 6w, 2C, 1.33GHz Intel® Atom® E3845: 10w, 4C, 1.91GHz Intel® Atom® E3826: 7w, 2C, 1.46GHz Intel® Atom® E3827: 8w, 2C, 1.75GHz
Chipset	Intel® SoC
DRAM	1 x SO-DIMM socket, supporting 1067 DDR3L memory up to 4G (non-ECC) N2930/E3845/E3827 supports up to 1333 DDR3L
BIOS	AMI BIOS
API/SW/FW	Watchdog API/utility, selectable timer: 1~255 seconds
Power Supply	DC-in 12V only
Dimensions	102 x 145mm (4.02" x 5.71")
Certifications	FCC / CE
OS Support	Windows 7 32/64bit

Graphics

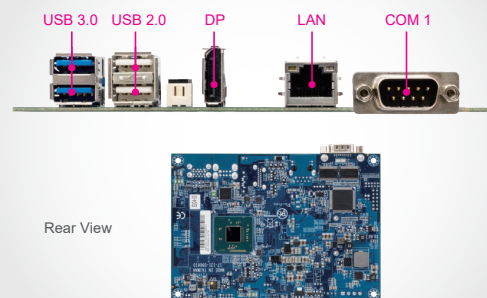
VGA	1 x VGA (pin header); up to 2560x1600@60Hz
Display Port	1 x DP (rear IO), resolution: up to 2560x1600@60Hz
LVDS	1 x LVDS (onboard conn), fixed to 800 x 600 18bit Resolution up to 1920x1200 by customized BIOS

* The discrete graphics card is necessary for display if the integrated graphics support is not available in the CPU.

Environment

Operating Temp.	-40~85°C (-40~185°F) for Atom® SoC SKU 0~60°C (32~140°F) for Celeron® SoC SKU
Storage Temp.	-40~85°C (-40~185°F)
Humidity	Operation humidity 20~90% Storage humidity 20~95%

I/O Panel View



I/O Ports

SATA Interface	1 x SATA II port (3.0Gb/s)
Serial Ports	4 ports COM1: RS232 (Rear IO) COM2/3/4: RS232 (pin header)
LAN	Single port Intel® I210IT (10/100/1000 Mbps) for Atom SKU Intel® I210AT (10/100/1000 Mbps) for Celeron SKU
Audio	Line-in, Line-out, MIC-in (pin header) Codec IC: Realtek ALC888 (high definition codec)
Digital I/O	4 in / 4 out (pin header)
USB	6 ports: 2 x USB 2.0 (internal wafer) 2 x USB 3.0 (rear IO) 2 x USB 2.0 (rear IO)
Expansion Bus	1 x half-sized mPCIe slot (with PCIe and USB signal)