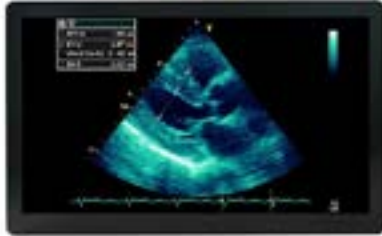


STAM2415LMC

Industrial Computer Source
(Deutschland) GmbH

Medical Display



- ✘ IP65 in front & IPx1 whole unit
- ✘ ALS (optional)
- ✘ Calibration mode (optional)
- ✘ PSM Priority Signal Management
- ✘ User modes for different settings
- ✘ PIP & PBP

+ Spec

I/O	
RS232	No
Input Interface	2 x DVI 1 x Display Port 1 x VGA 1 x CVBS 1 x S-Video 1 x Sync-on-video/HV 1 x USB HUB
Output Interface	1 x Sync-on-video
Mechanical & Environmental	
Power Type	24V DC In
Operating Temp	0°C ~ 40°C (32°F ~ 104°F)
Storage Temp	-20°C ~ 60°C (-4°F ~ 140°F)
Operating Humidity	10%~90% Relative Humidity, Non-condensing
Weight	7.4 Kgs
Construction	Plastic
Mounting Kit	Stand (Optional) VESA Mount kit (Optional) Wall Mount kit (Optional)
Vibration Test	With SSD/mSATA: 1.5Grms, IEC 60068-2-64, Random, 5 ~ 500Hz, 30min/axis
Shock Test	With SSD/mSATA: 10Grms, IEC 60068-2-27, Half Sine, 11ms
System Fan	Fanless
Dimension	573.77 x 387.77 x 63.5 mm
Certifications	
Certification Information	CE(EN60601-1,EN60601-1-7) FCC certified cTUVus certified
Panel	
LCD Size	24"
Display Type	WUXGA
Resolution	1920 x 1200
Luminance	250 Cd/m2
Contrast ratio	1000:1
Viewing angle	89/89 Deg. Horizontal & Vertical
Backlight	LED
Touch Type	Projective Capacitive
AG Protection Glass	Yes
DICOM compliant	Yes

+ Ordering

STAM2415LMC01
STAM2416LMC with AG Glass

STAM2415LMC02
STAM2416LMC with AG PCAP