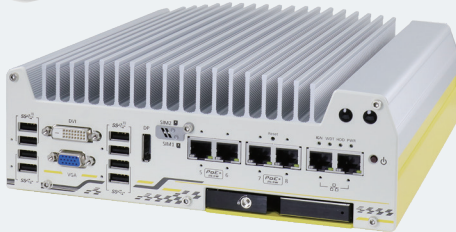


Nuvo-7100VTC Series

Intel® 8th/ 9th-Gen Core™ i7/i5/i3 In-vehicle Controller with 4x or 8x PoE+ Ports, DIO, CAN bus and RAID



Key Features

- Supports Intel® 8th/9th-Gen Core™ i7/i5/i3 LGA1151 socket-type CPU
- 4x or 8x 802.3at Gigabit PoE+ ports via M12 or RJ45 connectors
- Onboard isolated CAN bus for in-vehicle communication
- 4-CH isolated DI and 4-CH isolated DO
- 2x SATA ports with one hot-swappable HDD tray, supporting RAID 0/ 1
- 2x M.2 B key and 3x full-size mini-PCIe sockets
- 8~35V wide-range DC input with built-in ignition power control
- E-Mark and EN 50155 certificate

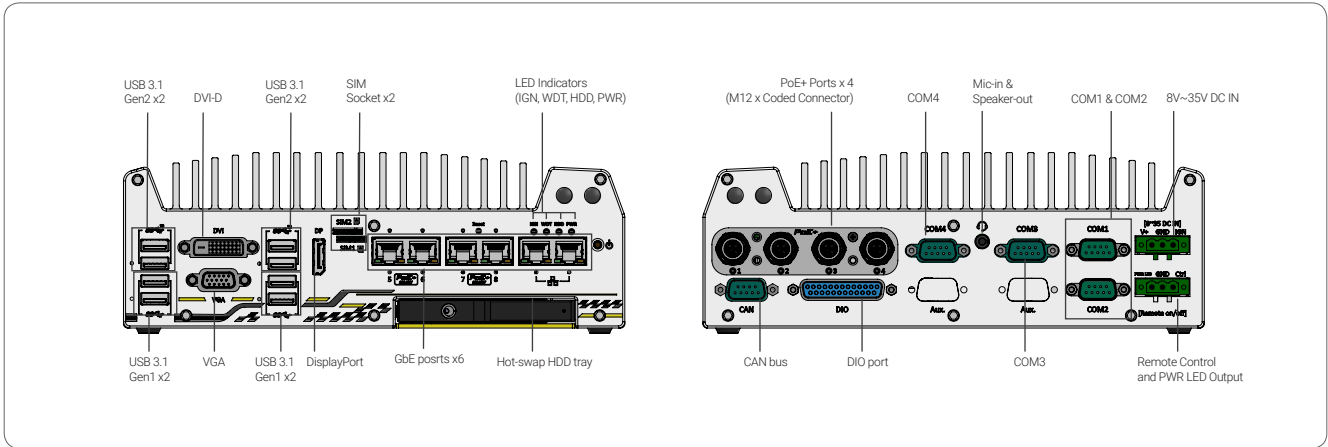
Introduction

Nuvo-7100VTC is a rugged in-vehicle controller featuring purpose-built set and effortless connectivity. Powered by Intel® 8th/ 9th-Gen Core™ processors with up to 6-core/ 8-core and 64GB DDR4 memory, it provides significant performance increases over previous generations. Nuvo-7100VTC provides flexibility to support a range of peripherals and connections. It has four or eight 802.3at PoE+ ports to supply 25W power to connected devices via M12 or RJ-45 connectors. Screw-lock mechanisms on GbE and USB 3.1 ports guarantee extreme rugged connectivity in shock/ vibration environments. Wireless connectivity is essential for modern day in-vehicle applications and you can simultaneously utilize two M.2 and three mini-PCIe sockets with corresponding 3G/ 4G, WIFI, GPS, and CAN module for this purpose. Additionally, Neosys provides an option of 4G cellular module certified to work with renowned US telecom company to minimize implementation time and cost. On top of all that, Nuvo-7100VTC also features isolated CAN bus, isolated DIO, 8~35V wide-range DC input with ignition power control and is in compliance with E-Mark and EN 50155. The Nuvo-7100VTC is the perfect solution with extraordinary reliability for various in-vehicle applications.

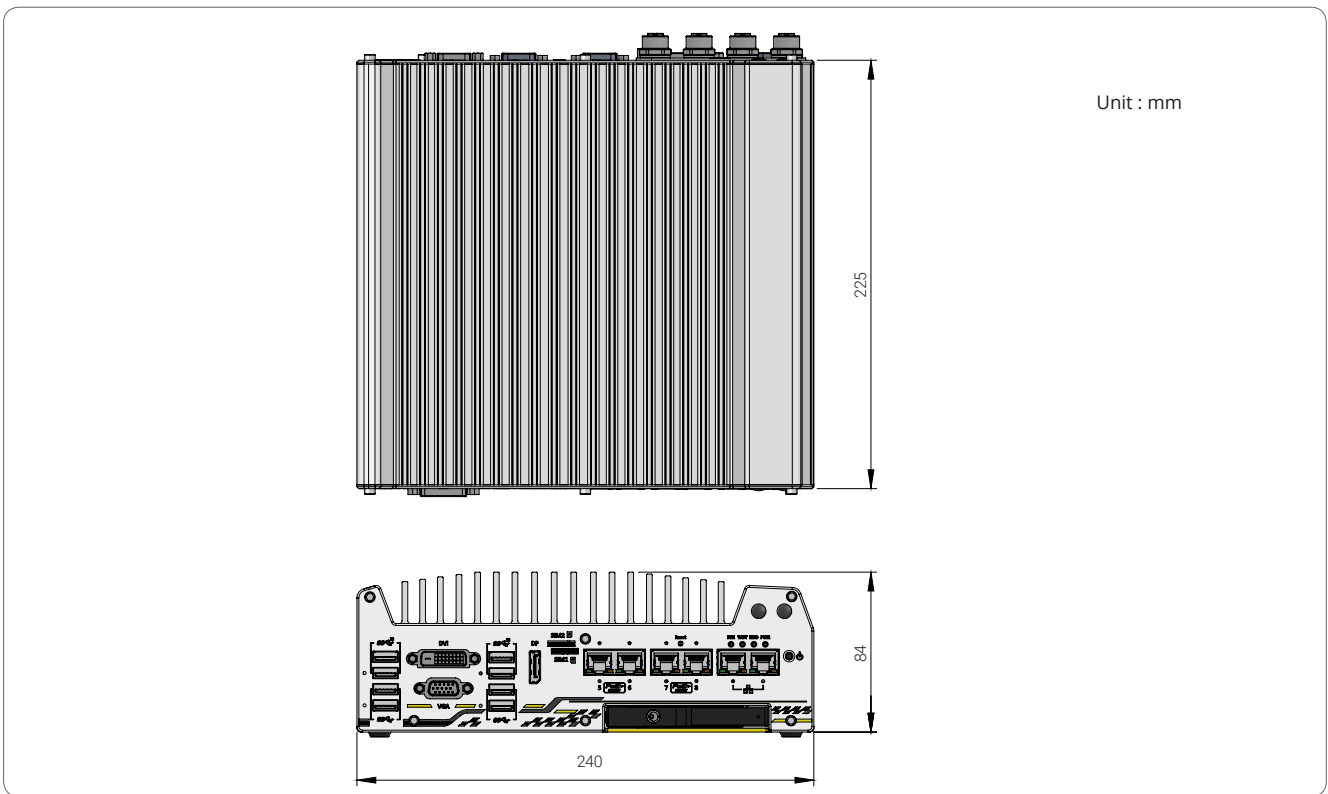
Specifications

System Core		Expansion Bus	
Processor	Supports Intel® 8th/9th-Gen CPU (LGA1151 socket, 35W TDP) - Intel® Core™ i7-8700T/ i7-9700TE - Intel® Core™ i5-8500T/ i5-9500TE - Intel® Core™ i3-8100T/ i3-9100TE	Mini PCI-E	1x full-size mini PCI Express socket with internal SIM socket (mux with mSATA) 2x full-size mini-PCIe sockets (USB signals only) with internal SIM sockets
Chipset	Intel® Q370 platform controller hub	M.2	2x M.2 2242 B key socket, one with dual front-accessible SIM sockets, supporting dual SIM mode with selected M.2 LTE module
Graphics	Integrated Intel® HD Graphics 630	Power Supply	
Memory	Up to 64 GB DDR4 2666/ 2400 SDRAM (two SODIMM slots)	DC Input	1x 3-pin pluggable terminal block for 8~35V DC input (IGN/ GND/ V+)
AMT	Supports AMT 12.0	Remote Ctrl. & Status Output	1x 3-pin pluggable terminal block for remote control and PWR LED output
TPM	Supports TPM 2.0	Mechanical	
I/O Interface		Dimension	240 mm (W) x 225 mm (D) x 84 mm (H)
Ethernet	2x Gigabit Ethernet ports by Intel® I219 and I210	Weight	3.5 kg
PoE+	4x IEEE 802.3at (25.5W) Gigabit PoE+ ports by Intel® I210 - M12 x-coded connector (Nuvo-7100VTC); - RJ45 connector (Nuvo-7104VTC) 8x IEEE 802.3at (25.5W) Gigabit PoE+ ports by Intel® I210 - RJ45 connector (Nuvo-7108VTC)	Mounting	Neosys' patented damping bracket (standard) or optional DIN-rail mounting
CAN	1x isolated CAN 2.0 port	Environmental	
Isolated DIO	4x isolated DI and 4x isolated DO	Operating Temperature	-40°C ~ 70°C **
USB	4x USB 3.1 Gen2 (10 Gbps) ports 4x USB 3.1 Gen1 (5 Gbps) ports	Storage Temperature	-40°C ~ 85°C
Video Port	1x VGA connector, supporting 1920 x 1200 resolution 1x DVI-D connector, supporting 1920 x 1200 resolution 1x DisplayPort connector, supporting 4096 x 2304 resolution	Humidity	10%~90% , non-condensing
Serial Port	2x software-programmable RS-232/422/485 ports (COM1/ COM2) 2x RS-232 ports (COM3/ COM4)	Vibration	Operating, MIL-STD-810G, Method 514.6, Category 4
Audio	1x Mic-in and 1x speaker-out	Shock	Operating, MIL-STD-810G, Method 516.6, Procedure I, Table 516.6-II
Storage Interface		EMC	EN 50155 (Nuvo-7100VTC), E-Mark (Nuvo-7108VTC) CE/FCC Class A, according to EN 55022 & EN 55024
SATA HDD	1x hot-swappable HDD tray for 2.5" HDD/ SSD installation 1x Internal SATA port for 2.5" HDD/ SSD installation, supporting RAID 0/ 1	* For i7-8700 and i7-9700E running at 65W mode, the highest operating temperature shall be limited to 50°C and thermal throttling may occur when sustained full-loading applied. Users can configure CPU power in BIOS to obtain higher operating temperature. ** For sub-zero operating temperature, a wide temperature HDD or Solid State Disk (SSD) is required.	
mSATA	1x full-size mSATA port (mux with mini-PCIe)		
M.2	1x M.2 2280 M key socket (PCIe Gen3 x4) for NVMe SSD or Intel® Optane™ memory installation		

Appearance



Dimensions



Ordering Information

Model No.	Product Description
Nuvo-7100VTC	Intel® 8th/ 9th-Gen Core™ in-vehicle controller with 4x M12 PoE+ Ports, DIO, CAN bus and RAID
Nuvo-7104VTC	Intel® 8th/ 9th-Gen Core™ in-vehicle controller with 4x RJ45 PoE+ Ports, DIO, CAN bus and RAID
Nuvo-7108VTC	Intel® 8th/ 9th-Gen Core™ in-vehicle controller with 8x RJ45 PoE+ Ports, DIO, CAN bus and RAID

Optional Accessories

Cbl-M12X8M-RJ45-500CM	M12 (8-pole-X-coded) to RJ45, CAT6, length : 500CM
Cbl-M12X8M-RJ45-1000CM	M12 (8-pole-X-coded) to RJ45, CAT6, length : 1000CM
PA-120W-OW	120W AC/DC power adapter 20V/6A; 18AWG/120cm; cord end terminals for terminal block, operating temperature : -30 to 70 °C.

Optional Cellular Module

NSIO-LTE-7455	Cat. 6 LTE embedded socket modem
---------------	----------------------------------